

FOR MORE INFORMATION:
www.atlantagaslight.com/STRIDE

Atlanta Gas Light | 10 Peachtree Place | Atlanta, Ga. 30309
404-584-3000 | www.atlantagaslight.com



Atlanta Gas Light®
An AGL Resources Company





Georgia STRIDE

Taking steps towards our energy future



ABOUT **ATLANTA GAS LIGHT**

Atlanta Gas Light, a wholly owned subsidiary of AGL Resources (NYSE: AGL), provides natural gas delivery service to more than 1.5 million customers in Georgia on behalf of approved gas marketers. The company safely operates and maintains a natural gas pipeline system over 55,000 miles long that delivers reliable, environmentally friendly natural gas. Founded in 1856, Atlanta Gas Light is the oldest continuously operating company in the state. For more information, visit www.atlantagaslight.com.

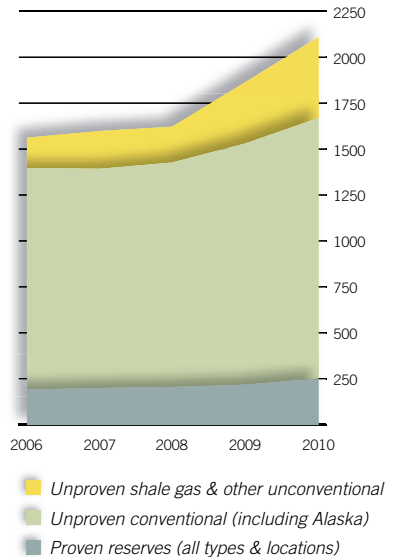
TRANSPORTING NATURAL GAS



More than 200,000 miles of underground transmission pipelines safely deliver natural gas every day to more than 160 million consumers in North America. The gas is moved by pressure, which gradually dissipates as the gas moves through a pipeline. Regulator stations strategically placed along a pipeline keep the gas flowing. Atlanta Gas Light, like other natural gas distributors, must meet strict federal and state safety and compliance regulations while operating its pipelines.

NATURAL GAS IS ABUNDANT AND DOMESTIC

Domestically abundant natural gas is a readily available solution for energy independence. In the past decade, proven U.S. natural gas reserves have increased approximately 45 percent to more than 244 trillion cubic feet. Beyond that – thanks to the development of new extraction technologies for natural gas shales – America now has an estimated 100 years' worth of supply at current consumption levels. This abundant supply in the United States reduces our nation's dependence on foreign countries for our energy needs.



BENEFITS OF **GEORGIA STRIDE**

Georgia STRIDE stimulates the local economy and retains jobs. Atlanta Gas Light's investment is expected to employ 150-200 construction workers each year—everything from right-of-way contractors and heavy-equipment operators to pipefitters and welders.

As the U.S. economy recovers, Atlanta Gas Light's upgraded infrastructure will be able to provide the additional natural gas needed for growth. Georgia STRIDE allows Atlanta Gas Light to bring a needed energy service to areas where growth is forecast or where homes and businesses do not currently have service, which will further boost the local economy.

Perhaps best of all, Atlanta Gas Light will be able to continue to provide ready access to America's cleanest and most domestically abundant fuel.

PIPELINE SITING AND CONSTRUCTION



Before a new pipeline route is proposed, multiple options are explored. Depending upon the need, Atlanta Gas Light considers increasing the size of existing pipelines and installing new pipelines next to existing ones. The company also looks for routes where it has existing right-of-way or where it can partner with another utility such as an electric company to use its right-of-way.

The careful planning of a pipeline route can take months. Atlanta Gas Light weighs important factors such as safety, community and environmental impact, engineering, reliability and cost. Only after all of these factors are considered is a new pipeline route authorized.

Generally speaking, pipeline construction involves meeting with landowners to discuss the project, surveying the right-of-way, preparing the right-of-way, construction and restoring the right-of-way to as near pre-construction condition as possible.



Dear fellow Georgian,

Since 1856, Atlanta Gas Light has been attuned to the needs of our community when we provided gas to light the city streets of Atlanta.

Today, we provide reliable natural gas service to 1.5 million customers in one of the fastest growing states in the nation. While we have a history of maintaining safe operations and have made significant enhancements to portions of our pipeline infrastructure, industry standards indicate we need to reinforce the system and prepare for additional growth.

Recently, Atlanta Gas Light received approval from the Georgia Public Service Commission to begin the Georgia Strategic Infrastructure Development and Enhancement Program (STRIDE), a program which allows us to make necessary upgrades to the current system.

Importantly, Atlanta Gas Light's investment in natural gas infrastructure sustains the prosperity of local communities. Our pipelines support continued local economic development across the state.

Perhaps best of all, we're ensuring families and business owners have ready access to America's most abundant, environmentally friendly fuel ... today and tomorrow.



As always, thank you for choosing natural gas.

A handwritten signature in black ink, appearing to read 'Suzanne Sitherwood'. The signature is fluid and cursive.

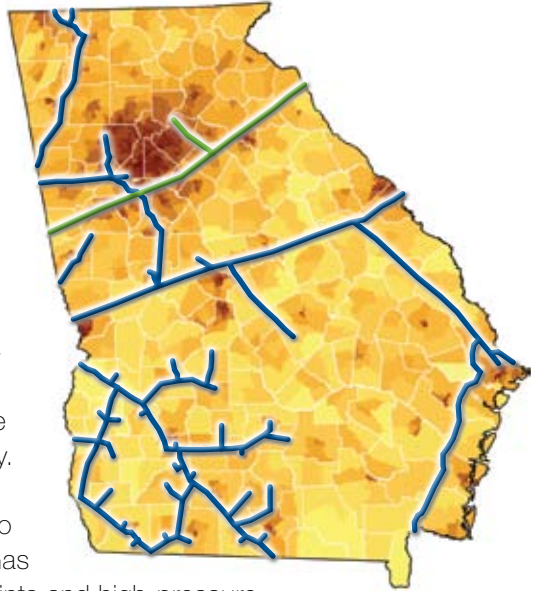
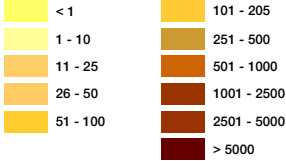
Suzanne Sitherwood
President, Atlanta Gas Light

VITAL STEPS TOWARDS GEORGIA'S ENERGY FUTURE

Interstate Pipelines

-  Southern Natural Gas Co
-  Transcontinental Gas Pipeline Corp

Georgia 2005 Population Per Sq Mile by Census Tract



U.S. Census shows that Georgia—particularly, greater metropolitan Atlanta—continues to be one of the fastest growing areas in the country. In Atlanta, much of the growth over the past two decades has shifted to regions further away from Atlanta Gas

Light's existing interstate supply points and high-pressure transmission pipeline system. Through Georgia STRIDE, Atlanta Gas Light will make critical upgrades to its system in order to meet its obligation to provide enough gas to serve customers on the coldest days of the year and to provide service to growing areas of metro Atlanta.

DIAGNOSING THE NEED FOR NEW PIPELINES

Atlanta Gas Light's engineers monitor the pressures on its pipelines on a regular basis, sometimes as often as once every hour. Atlanta Gas Light uses that data to evaluate the system's performance and to calculate future needs.

When it is determined that a current line is no longer adequate to maintain reliable service or that new lines are needed to meet future needs, Atlanta Gas Light conducts a study to analyze potential solutions. These remedies may include upgrading and/or enlarging a pipeline or installing new pipeline. Atlanta's population growth has dictated that improvements in the Atlanta Gas Light system must be made.

ABOUT GEORGIA STRIDE



On Oct. 6, 2009, the Georgia Public Service Commission approved a plan, the Georgia Strategic Infrastructure Development and Enhancement Program (STRIDE), to make necessary upgrades and extensions to the Atlanta Gas Light pipeline system.

Georgia STRIDE allows Atlanta Gas Light to make necessary upgrades to its pipeline system in metro Atlanta so the company can improve its service to home and business owners on days when the demand for gas is high. Under Georgia STRIDE, Atlanta Gas Light also has been approved to add lines in areas where new growth is expected or in areas where customers are not served by natural gas.

While Georgia STRIDE is the company's most extensive infrastructure project to date, it's just one of many public use projects undertaken by Atlanta Gas Light during its 154-year history as the company works to bring you and your neighbors environmentally friendly natural gas.

Under Georgia STRIDE, Atlanta Gas Light will make system improvements in the counties of:

- Butts
- Cobb
- Fulton
- Rockdale
- Cherokee
- Coweta
- Gwinnett
- Spalding
- Clayton
- Forsyth
- Henry

As with all of its construction projects, the safety of customers, the public and employees is Atlanta Gas Light's top priority. Great care will be taken in all phases of Georgia STRIDE projects from beginning to end in each neighborhood.

In terms of air quality, natural gas is the cleanest-burning fossil fuel – by far. Compared with coal, natural gas produces 45 percent less carbon emissions. Versus oil, natural gas provides energy with 30 percent less carbon emissions. And compared with propane, natural gas offers the same energy for heating, cooking and transportation with 11 percent less carbon emissions.

NATURAL GAS IS GREEN

Just as important, natural gas is the ideal partner for alternative energy sources like solar and wind, thanks to its ability to provide backup energy when the wind doesn't blow or the sun doesn't shine.